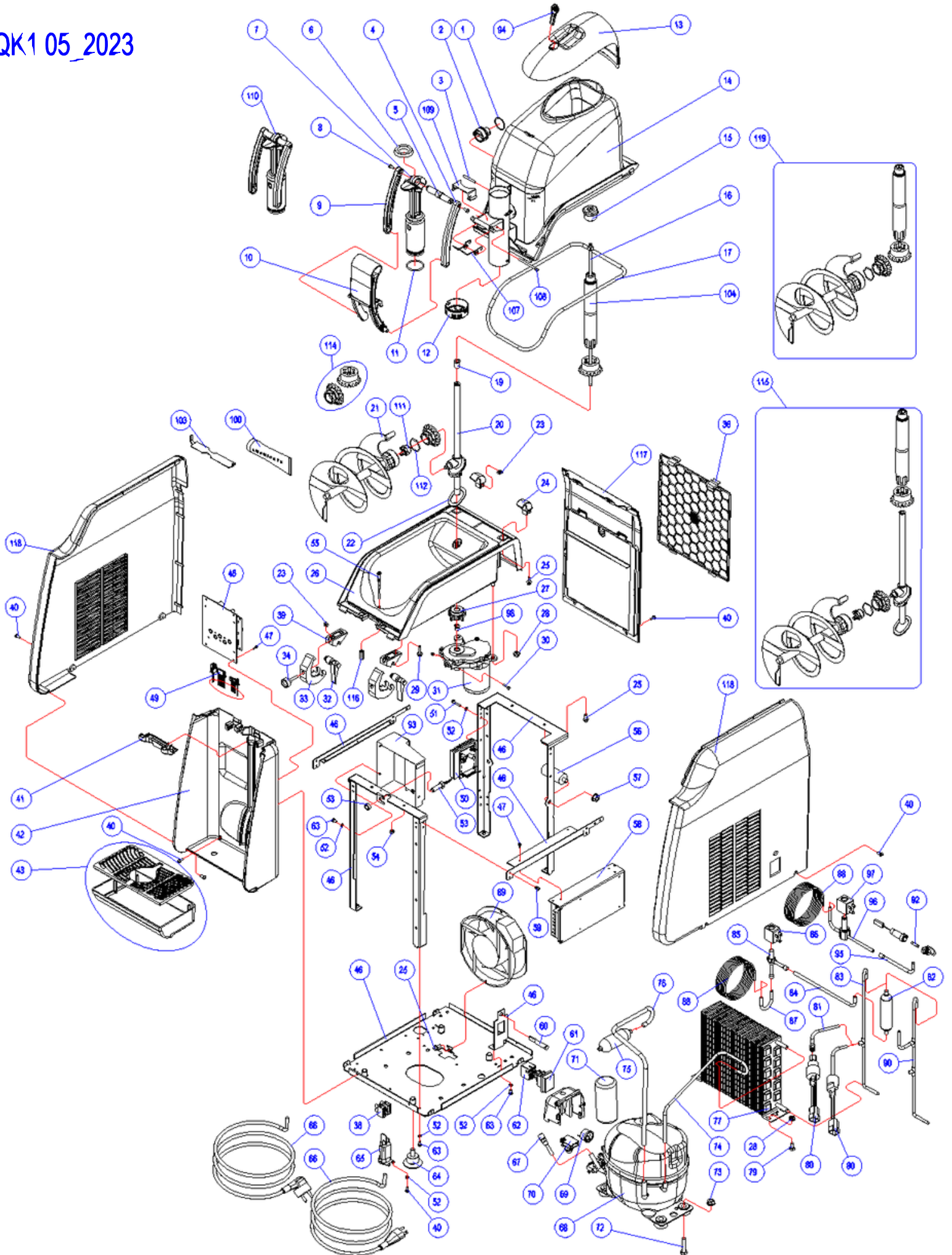


QK1 05\_2023



ADDITIONAL 10\$ FEE FOR ORDERS UNDER \$100 WILL BE APPLIED

PART#	Exploded View	DESCRIPTION	QK1	115/60
B0004107-002	1	FOOD RED SYLICON SLEEVE HOLDING GASKET OR2106	*	*
B0004101-002	2	QUICKREAM SLEEVE	*	*
B0000110-001	3	STEEL CYLINDRICAL PLUG 4X35MM	*	*
B0003108-002	4	RIGHT LEVER CONNECTION	*	*
B0003106-001	5	CONNECTIONS JUNCTION AXIS	*	*
B0003111-001	6	SILICON TAP RELIEF GASKET DE156	*	*
B0003109-003	7	QUICKREAM COMPLETE DRAIN PISTON	*	*
P0006105-001	8	STEEL SCREW	*	*
B0003107-002	9	LEFT HANDLE BRIDGE	*	*
B0003120-001	10	COMPLETE BLACK HANDLE WITH PIN	*	*
B0003112-002	11	PISTON SILICON GASKET OR 3118	*	*
B0003101-001	12	STAR SUPPLY VALVE	*	*
B0006109-002	13	TRANSPARENT COVER WITH LOCK	*	*
B0000102-003	14	QUICKREAM TRANSPARENT TANK WITH SLEEVE B0004101-002	*	*
M0000107-001	15	QK VERTICAL BLADE FIXING RING	*	*
B0000106-001	16	STEEL SHAFT WITH STEEL NUT	*	*
L0000106-001	17	TANK GASKET BB/QK	*	*
M0000104-001	19	TRANSMISSION SHAFT BUSHING	*	*
B0000103-004	20	QUICKREAM TRANSMISSION SHAFT WITH BUSHING 2017 VERS. For system B0100102-002	*	*
B0004102-003	21	QUICKREAM HORIZONTAL AUGER COMPLETE OF BUSHING 2017 VERS.	*	*
A0000114-001	22	TRANSMISSION SHAFT GASKET	*	*
M0000120-001	23	D5 SQUARE NUT	*	*
M0006103-003	24	BLACK REAR HINGE	*	*
M0001101-001	25	TE GALVANIZED SCREW 5X12	*	*
B0002101-002	26	QUICKREAM COMPLETE BLACK TANK NEW EVAPORATOR FROM S/N 131002754	*	*
M0000105-001	27	SHAFT FIXING RING	*	*
DADOD.6ZFL	28	M6 NUT	*	*
A0000115-001	29	SCREW TE M5X20MM	*	*
B0000117-001	30	KIT SCREW+NUT M3 BRUSHLESS/TRANSMISSION QK	*	*
B0005102-001	31	BRUSHLESS GEARMOTOR 24VDC	*	*
M0006115-003	32	BLACK FRONT HINGE	*	*
M0006102-003	33	BLACK HINGE HOOK	*	*
M0006119-001	34	SPLINED KNOB	*	*
A0006113-001	36	BLACK AIR FILTER	*	*
A0006113-006	36	GREY AIR FILTER	*	*
M0005151-001	38	POWER CORD SCREW TERMINAL BOARD	*	*
M0006116-003	39	BLACK BASE	*	*
M0006124-001	40	SCREW TC 3.9X9.5MM	*	*
B0006111-001	41	TRAY CONDENSATE	*	*
B0006105-002	42	FRONT PANEL BLACK QK	*	*
B0006118-001	43	KIT BLACK DRIP TRAY+ BLACK PLASTIC DRIP TRAY QK	*	*
B0101101-001	46	QUICKREAM STRUCTURE	*	*
M0000156-001	47	SCREW TCEI 3X8MM	*	*
B0005130-001	48	QUICKREAM ELECTRONIC BOARD VARIABLE SPEED	*	*
B0105101-001	49	QUICKREAM ELECTRIC INSTALLATION	*	*
B0005104-003	50	ELECTRONIC DRIVER BRUSHLESS COMPLETE VARIABLE SPEED+AMPERE CONTROL	*	*
VTT4X16Z	51	SCREW TC 4X16	*	*
ROND.D.4.3EDENT	52	INDENTED WASHER D,4,3	*	*
B0005105-001	53	SENSOR REED MEDER MK11/M8-BV14649	*	*
DADOD.5Z	54	M5 NUT	*	*
B0005101-001	55	ELECTRONIC THERMOSTAT PROBE COMPLETE	*	*
B0005134-001	58	SWITCHING POWER SUPPLY 100-240/24 LRS150-24	*	*
A0001102-001	59	RIVET 4X8	*	*
A0005105-001	60	COMPRESSOR WARNING LIGHT 110V	*	*
A0005105-002	60	GREEN LIGHT WARNING COMPRESSOR 110V	GREEN	*
A0005129-001	61	MAIN SWITCH SX82P12811210T00W ATEX	*	*
A0005106-001	62	MOLEX CONNECTOR FOR MAIN SWITCH	*	*
VTTE4X10Z	63	SCREW 4X10	*	*
PAR114-ELGR	64	RUBBER FEET	*	*
M0005112-001	65	CONNECTION FOR SUPPLYING WIRING	*	*
CAVOAL.U15ALAV	66	POWER CORD 115 V U.L.	*	*
A0002110-001	67	CHARGE VALVE+ COPPER PIPE D.6MM 4CM	*	*
A5402101-001	68	NEK2125GK 115V/60HZ COMPRESSOR	R404A	*
A5402104-001	68	COMPR. NEK2134U 115/60 862AG71M9AJ	GREEN	*
A5405101-001	69	THERMAL PROTECTOR NEK2125GK 115V/60HZ-100V/50HZ	R404A	*
A5405104-001	69	OLP THERMAL PROTECTOR NEK2134U 115V R290 2324063	GREEN	*
A5405105-001	70	RELAY NEK2134U 115V R290 2271155	GREEN	*
A5405103-001	71	START CAPACITOR NEK2125GK 115V/60HZ-100V/50HZ	R404A	*
A5405106-001	71	START CAPACITOR NEK2134U115V R290 2252324	GREEN	*
VTTE8X35Z	72	SCREW M8X35MM	*	*
DADOD.8ZFLAUT	73	NUT M8	*	*
B0102103-001	74	CUPPER PIPE COMPRESSOR-CONDENSATOR QK1 D.6X4,5	*	*
M0102112-001	75	ACCUMULATOR FC1 QK	*	*
B0102110-001	76	CUPPER PIPE ACCUMULATOR-COMPRESSOR QK1 D8X1 FROM S/N 131002754	*	*
L0002103-001	77	ALLUMINIUM-COPPER STFTT12218 CONDENSER	*	*
VTTE6X12Z	79	SCREW 6X12	*	*
A0002123-002	80	PRESSURE SWITCH NSDHMOOD12100 R404A	R404A	*
A0002122-002	80	R290 PRESSURE SWITCH	GREEN	*

ADDITIONAL 10\$ FEE FOR ORDERS UNDER \$100 WILL BE APPLIED

PART#	Exploded View	DESCRIPTION	QK1	115/60
B0102107-001	81	CUPPER PIPE TEE-PRESSOSTAT	R404A	*
A0002113-001	82	DRYER	*	*
B0102105-001	84	COPPER PIPE QK1 D6X4,5	*	*
A0102101-001	85	CEME BODY VALVE	*	*
AA605101-001	86	CEME COIL 5C 100-120/50-60 UL R04/RP1	*	*
M0102120-001	87	COPPER PIPE QK1 D6X4,5	*	*
A0002117-001	88	CAPILLARY 0,91MX1,7MT FROM S/N 131002754	*	*
BA105101-001	89	FUN BLADE A1175HBT 115V 50/60HZ	*	*
B0102106-001	90	KIT COPPER PIPE CONDENSER+CUPPER TEE+CUPPER TEE+FILTER	*	*
A0005103-001	92	FAST FUSE 315MA 5X20	*	*
B0000113-001	93	ELECTRONIC BOARD COVER BRACKET	*	*
B0006113-001	94	KEY FOR TRANSPARENT COVER WITH LOCK	*	*
B0102108-001	95	COPPER PIPE OLAB QK1 D6X4,5	*	*
A0102103-002	96	OLAB BODY VALVE 1WAY NC DN1,2 8433/B-R	*	*
AA005102-001	97	OLAB COIL 120/50-60 UL 11000BH/G6IU-2	*	*
A0000117-001	98	GEAR MOTOR BUSHING	*	*
A0000118-001	100	LUBRICANT FOOD CONTACT	*	*
B0003113-001	103	GASKET REMOVAL TOOL FOR B0003111-001 CODE	*	*
B0004113-001	104	QUICKREAM VERTICAL AUGER WITH BUSHING	*	*
B0003118-001	107	TAP CLOSING SPRING	*	*
B0003115-001	108	SPRING LOCKING PIN	*	*
B0003119-001	109	OPENING TAP REDUCTION BRACKET	*	*
B0003110-002	110	COMPLETE TAP	*	*
B0004115-001	111	LOCKING RING FOR BEVEL GEAR B0004114-007	*	*
B0004116-001	112	GEAR SILICON GASKET OR2093	*	*
B0004114-007	114	BEVEL GEAR US PA6FV+POM-C ESAG. For horizontal auger B0004102-003	*	*
B0004114-008	114	BEVEL GEAR QK DIAM.13,7. SPARE PART for horizontal auger B0004102-003	*	*
B0100102-002	115	KIT UPGRADE AUGER-GEARS QK USA	*	*
B0000122-001	116	NUT M5 H.15MM	*	*
B0006106-003	117	BLACK BACK PANEL QK 2020 assemblable with sides panel B0006116-00X	*	*
B0006116-001	118	KIT PLASTIC WHITE PANEL RIGHT LEFT 2020 assemblable with back panel B0006106-002	*	*
B0006116-002	118	KIT PLASTIC BLACK PANEL RIGHT LEFT 2020 assemblable with back panel B0006106-002	*	*
B0100102-004	119	KIT SPARE PART AUGER-GEARS QK DIAM.13,7	*	*
B0100102-003	119	KIT SPARE PART AUGER-GEARS QK/BL	*	*
B0106101-002		QUICKREAM 1 packaging	*	*